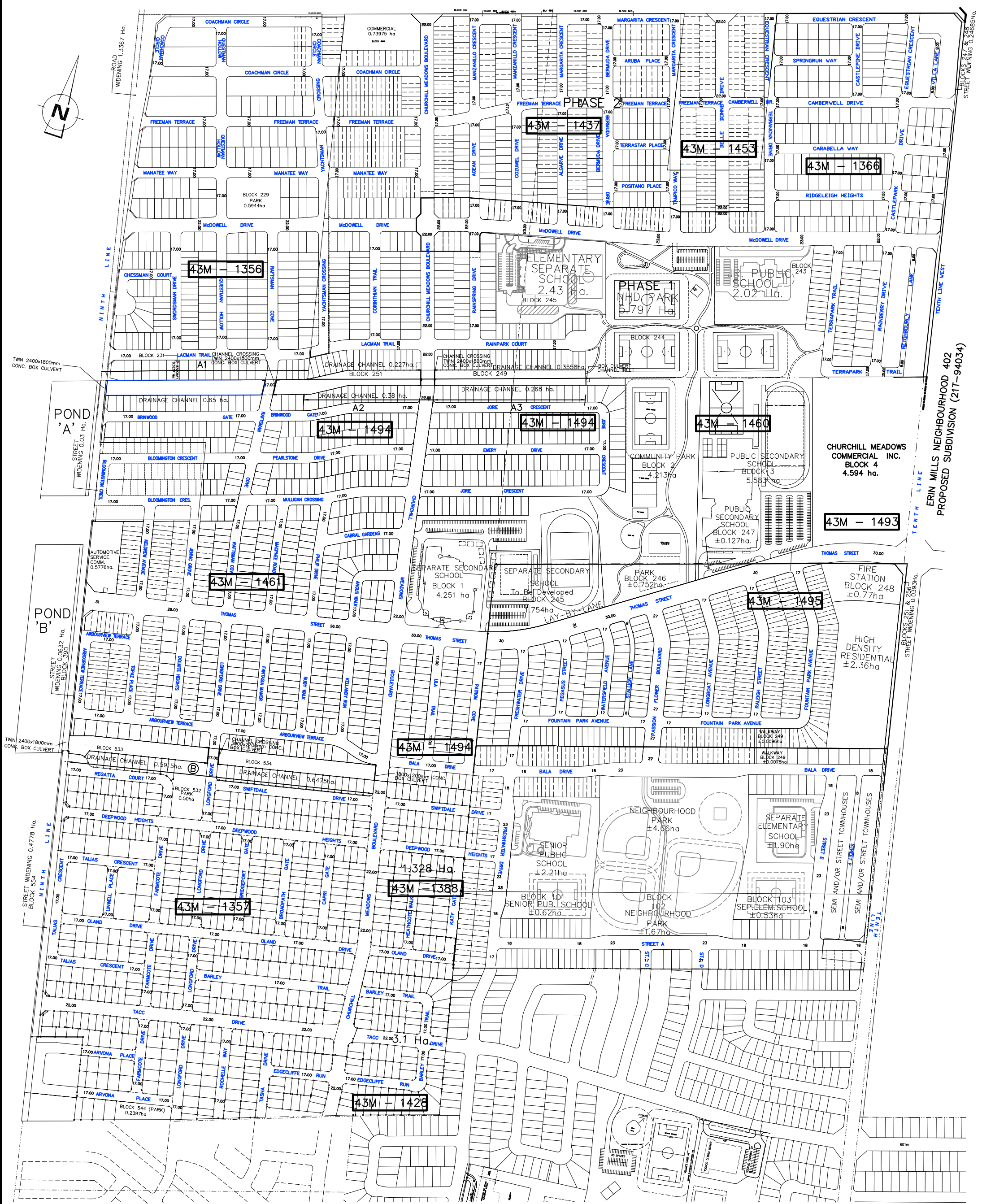
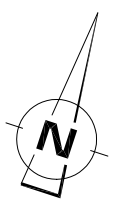


BRITANNIA ROAD WEST



TWN 2400x1800mm CONC. BOX CULVERT

POND 'A' STREET WIDENING 0.03 Ha.

POND 'B' STREET WIDENING 0.3032 Ha. BLOCK 530

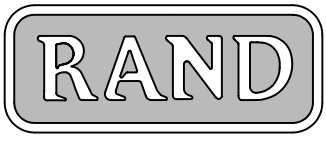
STREET WIDENING 0.4778 Ha. BLOCK 554

ERIN MILLS NEIGHBOURHOOD 402 PROPOSED SUBDIVISION (21T-94034)

STREETS 361 & 256 STREET WIDENING 0.0383 Ha.



REVISED NOVEMBER 22, 2001
0 50 100 150 200 250(M)
SCALE 1:2000



ENGINEERING CORPORATION

NORTHWEST CHURCHILL MEADOWS DISTRICT